

SUSTAINABLE SOLUTIONS FOR BUSINESS

The **TECHNICAL ASSISTANCE PROGRAM (TAP)** at the Illinois Sustainable Technology Center, part of the Prairie Research Institute at the University of Illinois Urbana-Champaign, offers **free** sustainability assessments providing a customized, hands-on assessment of production processes to reduce energy and water consumption, minimize carbon footprint, reduce waste, increase productivity, and drive innovation. System-wide assessments are available for eligible Illinois manufacturers, processing facilities, their direct suppliers and supporting industries. The assessment process includes:



BENEFITS TO YOUR COMPANY

Reduced business costs, energy costs, water consumption, wastewater generation, hazardous materials, and emissions, which:

- promotes sustainable manufacturing and growth,
- improves profitability and competitiveness,
- reduces environmental impacts while gaining a competitive advantage, and
- increases capacity to attract new business.

INCREASED

- + profitability, productivity, competitiveness
- + recycling and/or diversion of by-products

REDUCED

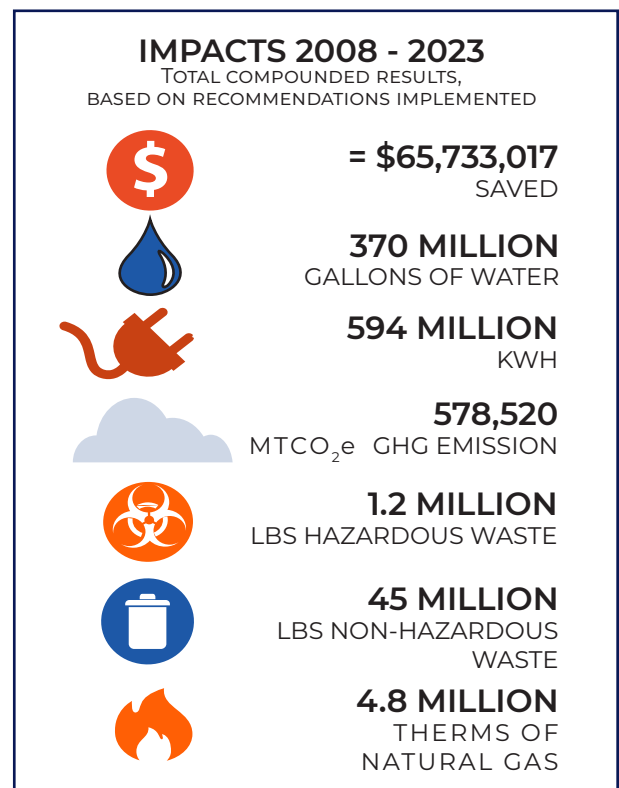
- operating costs
- water use, energy, and materials
- waste volume and/or toxicity
- emissions (VOC, HAP, & GHG)

To find out more, contact Irene Zlevor, izlevor@illinois.edu, or visit:

GO.ILLINOIS.EDU/SCHEDULE-SITE-VISIT

SUPPORTED INDUSTRIES

- Aerospace
- Automotive
- Chemical
- Food and Beverage
- Metal



**Prairie Research
Institute**

UNIVERSITY OF ILLINOIS URBANA-CHAMPAIGN

**Illinois Conservation of Resources and Energy
(ICORE)**

FUNDING FOR THIS PROJECT PROVIDED BY U.S. EPA REGION V